

**Technical Report on the Senore
Gold Property, Abitibi, Québec;**
in accordance with
National Instrument 43-101

Submitted to
Adventure Gold Inc.

Rémi Charbonneau,
Geologist, Ph.D.,
OGQ member #290

November 12th, 2008

2. Table of Contents

1. Title Page	1
2. Table of Contents	2
2.1 List of Figures	3
2.2 List of Tables	3
3. Summary	4
4. Introduction and Terms of Reference	5
5. Reliance on Other Experts	5
6. Property Description and Location	6
7. Accessibility, Climate, Local Resources, Infrastructure and Physiography	7
8. History	7
8.1. History of the Val-d'Or Gold Mining Area	7
8.2. History of the Senore Property	8
8.2. Geological mapping	9
8.2. Geochemical sampling	10
8.3. Historical drilling	10
9. Geological Setting	10
9.1. Regional Geology	10
9.2. Property geology	11
10. Deposit Types	11
11. Mineralization	12
11.1 . The Resenor Zone	12
11.2 The 104 Zone	14
11.3 The North Zone	14
12. Exploration	15
13. Drilling	15
14. Sampling Method and Approach	15
15. Sample Preparation, Analyses and Security	16
16. Data Verification	16
17. Adjacent Properties	16
18. Mineral Processing and Metallurgical Testing	17
19. Mineral Resources and Mineral Reserve Estimates	17
20. Other Relevant Data and Information	17
21. Interpretation and Conclusions	17
22. Recommendations	18
22.1 Phase I	18
22.2 Phase II	20
23. References	21
24a. Date and Signature	24
24b. Certificate of Author	25
25. Additional Requirements	26
26. Illustrations	26

2.1 List of Figures

Figure 1. Location of the Senore Gold Project	26
Figure 2. Claim map of the Senore Property	27
Figure 3. Generalized geology and gold deposit of the Val-d’Or area.....	28
Figure 4. Geology and mineralisation of the Property.....	29
Figure 5. Historical exploration	30
Figure 6. Historical development of the Resenor Zone	31
Figure 7. Recommended drill program.....	32

2.2 List of Tables

Table 1. Senore Property claim list.....	6
Table 2. Drill intersections at the Resenor Zone	13
Table 3. Drill intersections at the “104” Zone	14
Table 4. Drill intersections at the North Zone	15
Table 5. Budget recommended for Phase I and Phase II	19

3. Summary

Adventure Gold's (the "Company") Senore Gold Project (the "Property") is subject of an ongoing exploration campaign of 2,000 metre diamond drilling following the recent discovery of gold mineralization (up to 35.9 g/t Au over 0.5 m) in a nearby drill hole carried-out by Adventure Gold on its wholly-owned Beaufor North property adjacent to Senore. The ongoing campaign aims to test the possible extension of the newly found mineralization and its possible connection with the historical Resenor Deposit included in Senore claims. A budget of C\$220,000 is already allocated for this program.

The Property consists of 17 minning claims located at the western limits of Pascalis Township, in the Abitibi region of Quebec, at about 22 kilometres east-northeast of Val-d'Or. The claims were optionned from Peter Bambic (the "Optionnor") in consideration of staged exploration expenditures (totalling \$400,000) and scheduled payments (totalling 200,000 in cash and 1,000,000 common shares) over a period of three years. Once complete, Adventure Gold will own a 100% interest in the property though the Optionnor will retain a 2% to 3% Net Smelter Return ("NSR"), half of which can be repurchased by Adventure Gold.

Senore can be accessed by an all-weather gravel road crossing the southern part of the property. Local topography is almost flat because of an extensive glacio-lacustrine plain grading to an outwash plain to the north. Glacio-lacustrine cover along with swampy cover, result in sparse bedrock exposure..

Gold was initially discovered on the Senore property in 1932 when diamond drilling by Senore Gold Mines Ltd. delineated the Resenor gold zone where a 152.4 metre shaft was sunk in 1939-1940. Underground development was carried-out on levels at 66 m, 120 m, 164 m (originally 200, 350 and 500 feet) before being abandoned in 1940. Geophysical surveys and diamond drilling were performed from 1945-1947 and from 1973-1981 by various companies. In 2004, magnetic and IP surveys followed by six diamond drill holes were carried-out by Thelon Ventures Ltd resulting in the discovery of significant gold near the Resenor Zone.

The Val-d'Or mining district is known for its mesothermal, vein-type gold deposits, which characterize the adjacent Beaufor-Perron mines which have produced 990 000 ounces to date. These occur in granodioritic rocks of the Bourlamaque Batholith which intrude volcanic rocks of the Abitibi greenstone belt. At Beaufor, gold mineralization is concentrated in fractured zones near east-west-trending faults. The Senore Property straddles the eastern contact of the Bourlamaque Batholith with surrounding volcanics mainly basalts and trachyte. Historical drilling led to the discovery of three gold zones on the Senore Property namely, from south to north, (1) the Resenor Zone (also referred to as Main Zone, or South Zone), (2) the 104 Zone and (3) the North Zone. Gold mineralization is found in quartz cored shears at Resenor as well as in quartz-carbonate-tourmaline-pyrite veins at the North Zone. The latter being typical of the Val-d'Or camp

and particularly at the adjacent Beaufor Mine. Gold content of the three gold bearing zones shows significant variation from 1 to 20 g/t Au being associated with scattered coarse pyrite.

The economic potential of the Senore Property is based on the presence of gold bearing vein system quite similar to mineralization presently exploited at the adjacent Beaufor Mine. Past exploration concentrated on surface depths up to 200m. The current drill program was undertaken to test the extension at depth of the known mineralized zone. It is recommended to pursue this campaign with an operating budget of C\$1,200,000. A total of 9,150 metres are proposed on the property where gold mineralization is known to occur.

4. Introduction and Terms of Reference

This report provides a general description of Adventure Gold's Senore Gold Project. It is presented in compliance with National Instrument 43-101.

It is understood that this report will be used to provide disclosure to the Company's Board of Directors, to support future financing activities and that it will be submitted to the TSX Venture Exchange.

The data was obtained from assessment exploration files as cited in the text. Information about the locations and status of the mining claims comprising the Property has been taken from the GESTIM website of the MRN. Assessment files, public maps and specific studies can be accessed from the SIGEOM and EXAMINE web sites maintained by the *Ministère des Ressources Naturelles et de la Faune* (MRN).

The author visited the property on November 7th 2008. The current drill site was visited allowing for the examination of the drill core and an inspection of the sampling protocol.

5. Reliance on Other Experts

Historical work reported in this technical report is based on assessment files and, although the author has made every possible attempt to accurately report information contained in these files and maps, he cannot verify the accuracy or completeness of the obtained data. The author also rely on previous compilation by Henriksen (2004), Lambert (2004) (geophysical works) and Bowdidge 2005. Authors of historical assessment reports might not all be qualified persons according to National Instrument 43-101. Nevertheless, this data remains appropriate and valid in assessing the mineral potential of the Senore Property.

6. Property Description and Location

The Senore Property is located in western Québec (Figure 1) and it consists of 17 contiguous mining claims totalling 728.7 hectares (Figure 2) in the Pascalis Township, Abitibi region, approximately 22 kilometres east-northeast of Val-d’Or (Table 1). The claims are 100% owned by Peter Bambic (the “Optionnor”) and are in good standing with expiry dates beginning in August 2009 (Table 1). According to the option agreement signed on the July 8th, 2008, Adventure Gold can acquire a 100% interest on the Property by incurring C\$400,000 in exploration expenditures, paying a total of C\$200,000 and delivering 1,000,000 shares to the Optionnor according to a specified schedule, spanning a period of three years. After completion of the option, Peter Bambic will retain a NSR royalty as follows:

- a 3% NSR on claims 5101084 and 5101084, a half of which (1.5% NSR) can be repurchased for C\$2,000,000 at any time
- and a 2 % NSR on the balance of the property, a half of which (1% NSR) can be repurchased for C\$1,000,000 at any time

Future exploration expenditures will allow the Company to maintain the claims. To the author’s knowledge, there is no environmental liability relating to the Property. The old shaft on the Property is covered with a concrete cap, which eliminates the only obvious safety hazard.

Table 1. Senore Property claim list.

Claim	Township	Range	Lot	Expiry	Area(ha)	Ownership
CDC 33453	Pascalis	0003	0003	10/08/25	42.49	PETER BAMBIC 100 %
CDC 33454	Pascalis	0003	0004	10/08/25	42.48	PETER BAMBIC 100 %
CDC 33455	Pascalis	0004	0002	10/08/25	42.57	PETER BAMBIC 100 %
CDC 33456	Pascalis	0004	0003	10/08/25	42.57	PETER BAMBIC 100 %
CDC 33457	Pascalis	0004	0004	10/08/25	42.59	PETER BAMBIC 100 %
CDC 42008	Pascalis	0003	0005	10/10/03	42.47	PETER BAMBIC 100 %
CDC 42009	Pascalis	0003	0006	10/10/03	42.24	PETER BAMBIC 100 %
CDC 42010	Pascalis	0003	0007	10/10/03	43	PETER BAMBIC 100 %
CDC 42011	Pascalis	0003	0008	10/10/03	42.49	PETER BAMBIC 100 %
CDC 42012	Pascalis	0003	0009	10/10/03	42.39	PETER BAMBIC 100 %
CDC 42013	Pascalis	0003	0010	10/10/03	42.36	PETER BAMBIC 100 %
CDC 42014	Pascalis	0003	0011	10/10/03	42.39	PETER BAMBIC 100 %
CDC 42015	Pascalis	0003	0012	10/10/03	42.45	PETER BAMBIC 100 %
CDC 42016	Pascalis	0004	0005	10/10/03	42.59	PETER BAMBIC 100 %
CDC 42017	Pascalis	0004	0006	10/10/03	42.59	PETER BAMBIC 100 %
CL 5101084	Pascalis	0003	0002	09/08/27	61	PETER BAMBIC 100 %
CL 5101088	Pascalis	0019	0000	09/08/27	30	PETER BAMBIC 100 %

The Company has already obtained a permit for clearing trails and drill access to public land in conjunction with the ongoing drill campaign on the Property.

7. Accessibility, Climate, Local Resources, Infrastructure and Physiography

The Senore Property can be accessed by a gravel road from the town of Val-d'Or leading north towards Val-Senneville. This road links the village of Perron and the Beaufor Mine, both of which lie approximately 1 km south of the Property (Figure 3). This road cuts across the southwest corner of the Property (Figure 4) while its northern part is only accessible by old logging roads. An electric power line serves the Beaufor Mine site. Diverse and quality exploration services and personal can be found in Val-d'Or. The Property lies on the eastern part of the Abitibi glacio lacustrine plain. Some agricultural activity, though now mostly abandoned takes place in the region. The topography shows extensive flat and often swampy clay-covered areas with bedrock or glacio fluvial ridges piercing the glacio-lacustrine plain. The Senore Property is typical of the region, with a few scattered outcrops in a more or less uniformly flat forested plain. Drainage proceeds generally south through the Bourlamaque River.

8. History

8.1. History of the Val-d'Or Gold Mining Area.

The mining activities in the Val-d'Or mining district go back to the discovery of Lamaque and Sigma Mines (Figure 3) in the 1920's. Gold was first discovered in 1931 on the Perron property by the prospector J. Matthews and the adjacent Beaufor Property was claimed by G. Bussière in 1930. In 1932, irregular gold-bearing veins were also discovered in the nearby Pascalis property. All of these discoveries are characterized by the same type of gold mineralization. Consequently, the history of each contiguous mining property can be divided into a period of discovery, followed by development and then by an initial production stage in the years 1931 to 1960 and resumption of exploration, from 1960 to present day.

A total of approximately 36 mines have produced 23.6 million ounces of gold from 135 million tons milled. The data cannot be compiled in detail because several of the mines have operated under different names at different times, and in some cases, two or more mines have been incorporated into a single operation. Currently, there are several producing gold mines in the Val-d'Or/Malartic area (Beaufor, Kiena, Lac Herbin and Goldex).

8.2. History of the Senore Property

Gold was discovered on the Senore Property in 1932 at the location where a shaft was subsequently sunk on lot 2, Range III (Figure 5 and 6). Heavy overburden made trenching unproductive therefore 5,791 metres of diamond drilling was carried out between 1936 and 1939 by Senore Gold Mines Ltd. The discovery vein was reported to extend for a length of over 183 m (600 feet) striking N 55° W and dipping 55° to the SW. This quartz vein forms the core of a six metre wide shear zone which had been traced for 275 metres along strike. The quartz core was reported to average 1.5 metres in width with an average grade of 8.36 g/t Au, on the basis of six drill holes, to a depth of 76 m (Norrie 1939).

In 1939-1940, a 152-metre shaft was sunk on the discovery zone, with levels at 66, 115 and 165 metres (originally 200, 350 and 500 feet). A composite plan of the underground works (Figure 6) shows that the main development was on a northwest-striking vein dipping at 55° to the SW. It also shows a long crosscut on the 115 m level extending at least 133 metres north of the main vein, suggesting that drilling had defined at least one other target to the north of the shaft. This may have been the 104 Zone (see below under “Mineralization”). At least 26 underground diamond drill holes were drilled at the 66 and 166-metre levels (Ross 1940 and 1941).

There appears to have been no work done between 1940 and 1945, at which point the Property was reactivated by Resenor Gold Mines Ltd. Between 1945 and 1947, magnetic and resistivity surveys were carried out, with 1,560 metres of surface diamond drilling in seven holes, and additional drifting and crosscutting on the 115 metres level. The development was abandoned in 1947 for unknown reasons.

The Property apparently remained latent until 1973 when it was acquired by El Coco Explorations Ltd. Between 1973 and 1979, El Coco Explorations conducted magnetic and VLF-EM surveys, basalt till geochemistry and diamond drilling of 9 holes totalling 1,253 metres, which resulted in the discovery of the North Zone. An additional three drill holes were situated outside the present property in Senneville Township to the west (Bergmann 1973, 1974, 1975a, 1975b, 1976, 1977, 1978a, 1978b and 1979).

In 1980, a VLF-EM survey was carried out on the Range IV part of the Property by Hughes (1980). In 1983, El Coco Explorations Ltd. carried out further VLF-EM surveys, and in the following year, Metalor “A” Limited Partnership carried out an 18-hole diamond drill program totalling 3,132 metres as well as a partial IP survey (Bergmann 1983, Boileau 1983 and Gauthier 1984).

In 1997, Amblin Resources Inc. carried out a magnetic survey (Chartré 1997) followed by an IP survey in 1999 (Zalnierunas 1999). In 2001, Globex Mining Enterprises conducted a magnetic survey over lots 2 Ranges II and III, and in 2003, an additional magnetic survey over lot 3, Range III was carried out by 4097394 Canada Inc.

In 2004, Thelon Ventures Ltd. carried out a program of line cutting, magnetic (45.3 line-km) and IP (41.0 line-km) surveys over lot 2, Range II and lots 2-6 of range III (Lambert 2004) followed by a 6-hole diamond drill program totalling 753 metres (Henriksen 2004). Their magnetic survey show three domains. In the east part and northwest corner of the map are areas of moderate magnetic relief, up to a maximum of 1,000 nT, with a well-defined northwest trend, corresponding to primary layering of the volcanics. In the southwestern part of the grid is an area of low magnetic relief with no coherent pattern, corresponding to quartz-diorite of the Bourlamaque Batholith. In the centre, running north-south, is a strong magnetic anomaly with maximum amplitude of 3,000 nT, believed to correspond to hornblendite (Figure 4), although this identification is based on a single outcrop. Nevertheless, this prominent north-south anomaly appears to have been offset by a series of both east-west and northeast-southeast trending structures.

The IP surveys (Boileau 1983, Zalnieriunas 1999) show numerous chargeability anomalies (Figure 5). Those few which coincide with magnetic highs may be caused by magnetite, which may or may not cause an IP effect. The remainder is likely caused by sulphides, and therefore represents targets for gold exploration. It should be emphasized, however, that the absence of an IP anomaly does not mean that gold cannot be present. If the sulphide content is less than approximately 3% in a small zone, it will give only a very weak IP response.

8.2. Geological mapping

Recent compilation of geological mapping in the eastern part of the Abitibi SubProvince was provided by the MRN (Rocheleau *et al.* 1997). This area is also subject to several geological publications on specific aspects of the Val-d'Or mining camp (Latulipe 1976 Campiglio, C. M. and Darling, R., 1976, Dimeroth et al 1982, Berger 2003, Hubert et al 1984, Imreh 1976).

8.2. Geochemical sampling

The area was covered by a regional basal till sampling from Pionjar-type portable drilling apparatus (LaSalle and Henry 1987). The fine fraction of small basal till samples was submitted for gold assay. About 9 samples were taken on the Senore Property and immediately downice from it but these samples failed to return any detectable gold. Contrastingly, similar drilling by El Coco Exploration targeting IP axis returned a few positive results, which help to prioritize exploration targets (Bergmann 1977, 1979).

8.3. Historical drilling

Several short holes were carried out on the southern part of the Property (Figure 5). Although initial discovery is poorly documented, it must have been discovered from drilling work given the thick and continuous overburden cover. Soon after, however, the thickness and orientation of the gold bearing quartz found at the core of a shear zone was determined to a depth of 76 m, from six drill holes from over than 32 (Norrie 1939). During development activity on the Resenor Zone, there were at least 26 holes completed from underground drilling from the 66 and 166 metre levels (Ross 1940 and 1941).

An 18-holes drill program totalling 3,132 metres was carried out by El Coco Explorations in 1983 (Bergmann 1983, Boileau 1983) leading to the discovery of the North Zone (Gauthier 1984).

In 2004, five drill holes were completed by Thelon Venture Ltd. Two of these (SE04-01 and 02) were drilled on the Resenor Zone and one (SE-04-03) on the North Zone. The results of these drill holes are discussed under Section 10: Mineralization. The other two drill holes SE-04-04 and SE-04-05/06 (05 was abandoned and restarted as 06) were drilled on IP anomalies in the northwestern part of the grid, near the inferred contact of the Bourlamaque Batholith. Both of these intersected diorite and granodiorite (or quartz-diorite) with mafic dykes, zones of brecciation, sulphide-bearing zones and quartz veins with pyrite and chalcopyrite but failed to return significant gold values.

9. Geological Setting

9.1. Regional Geology

The Senore Project is located in the Val-d'Or mining district, which occupies the eastern part of the Abitibi greenstone belt (Figure 3). This Archean aged assemblage of volcanic with minor sedimentary rocks constitutes the Abitibi Subprovince of the Superior (Hocq 1994). These rocks are host to several vein-type, mesothermal, gold deposits. The latter are commonly associated with subsidiary structures related to the Larder/Lake-Cadillac break, a major tectonic zone that marks the southern boundary of the Abitibi

greenstone belt (Robert 1990). Tremblay (2001) points out that the Beaufor Mine is also a mesothermal vein-type gold deposit, though hosted by the Bourlamaque Batholith, which is a synvolcanic intrusion crosscutting the Archean volcanic rocks of the Abitibi greenstone belt (Taner and Trudel 1989).

9.2. Property geology

The claims partly include the eastern contacts of the Bourlamaque Batholith (Figure 4). Structurally, this context may correspond to a low compressional area favourable for gold vein mineralization, as suggested by the location of the Beaufor Deposit. The western part of the property covers approximately 2.2 kilometres of the batholith which consists of diorite grading to granodiorite. The remainder, which makes up the most part of the Senore Property, is underlain by tholeiitic mafic volcanics, with some komatiite and/or basaltic komatiite (largely inferred from magnetic data) in the north. A prominent feature is a north-south body of hornblendite (also largely inferred from magnetic data) measuring 1.9 kilometres in length and up to 250 metres wide (see Figure 4).

10. Deposit Types

Archean gold lode deposits of the Val-d'Or are mostly classified as mesothermal vein-type, believed to have developed at depths of 1 to 3 km (Poulsen 1995). These vein systems consist mostly of quartz and carbonate and they occur in close association with brittle-ductile shear zones and folds. Vein mineralogy is quite simple with quartz, carbonate, pyrite and gold, frequently accompanied by tourmaline and occasionally by chalcopyrite, sphalerite and sheelite. Gold can also be found in disseminated sulfides contained in altered wall rocks. Examples from the Val-d'Or mining district (Figure 3) include the Sigma, Lamaque, Belmoral, and Beaufor deposits (Robert 1989; 1990, Robert *et al.* 1994; Vu, 1985, Tremblay, 2001).

At the Beaufor Mine, gold mineralization is confined to a highly fractured zone bounded by two east-west-trending faults. The Perron Fault, trending at 80° and dipping to the north, corresponds to the northern boundary while the South Fault, which trends 60°-70° with a southward dip, forms its southern boundary. Gold is mainly contained in thick easterly trending veins of quartz tourmaline and pyrite dipping 25° or 55° south (Tessier 1990, Chabot 2007). Local thickening and enrichment of the veins appears to be associated with northeasterly (070°) trending mafic dykes (Tremblay 2001, Chabot 2007).

11. Mineralization

To date, three gold-bearing mineralized zones have been discovered on the Property: the Resenor Zone, the 104 Zone and the North Zone (Figure 4). All three zones are hosted by the marginal zones of the Bourlamaque Batholith. Resenor and 104 are hosted in quartz-cored shear zone while the North Zone is characterized by quartz-tourmaline pyrite veins, similar to the nearby Beaufor Mine, as detailed below.

11.1. The Resenor Zone

The Resenor mineralization also called Main Zone by Thelon Ventures Ltd (Bowdidge 2005) or South Zone of El Coco Exploration consists of a west-northwest striking shear zone that dips at approximately 50° to the southwest. The shear itself is reported to be mineralized with pyrite, and hosts numerous quartz and quartz-carbonate veins and stringers carrying 3% or less pyrite, pyrrhotite and chalcopyrite with traces of molybdenite. Tourmaline is also reported. Gold values appear to be erratically distributed, due to its association with scattered coarse pyrite grains.

Development on this zone was initiated by the sinking of a shaft in 1939 by Senore Gold Mines. A composite underground plan (Figure 6), dated January 1940 and reproduced by Bowdidge (2005), shows that on the 66 m level, the shear is up to 20 metres wide (measured horizontally) with numerous lenticular quartz veins running more or less parallel to the host shear. No veins are indicated on the 115 m level, while on the 165 m level, there are several notations of flat-lying quartz stringers. In an attempt to construct a cross section of the Resenor Zone, Bowdidge (2005) faced many uncertainties about hole location and he reported great variation in grade and width of the mineralized shear zone with some possible splits.

Table 2 gives a summary of the significant drill intersections on the Resenor Zone.

Note: the widths given are all core lengths, true widths cannot be estimated without a better knowledge of the geometry of the mineralized veins and their host shears. It should also be noted that for all the pre-1978 drill holes, only summary assay results are available, and in many cases, there is no assay data at all. Furthermore, there is some uncertainty as to the exact locations of all the holes, with the exception of those drilled in 2004 by Thelon Ventures Ltd.

Although a historical estimate of 181,400 tons at 8,6 g/t Au has been released earlier for the Resenor Zone (Germain 1984, MRNF-Sigeom), this material predates 43-101 disclosure standards and is not used otherwise in this report. Systematic drilling is recommended to provide data for such an evaluation to be done in the near future.

Table 2. Drill intersections at the Resenor Zone (after Bowdidge, 2005)

Hole (no)	from (m)	to (m)	length (m)	Assay (g/t Au)
18	35.10	36.30	1.20	4.11
19	49.00	49.40	0.40	3.77
	94.80	95.10	0.30	8.23
	98.00	98.80	0.80	2.06
20	24.10	24.70	0.60	66.51
21	35.10	35.80	0.70	1.37
25	24.70	26.70	2	14.41
28	75.70	77.00	1.30	12.85
30	71.60	72.70	1.10	2.40
31	33.50	34.70	1.20	6.17
32	53.60	54.80	1.20	2.40
EC-78-4	40.30	40.80	0.50	1.37
	54.00	54.70	0.70	2.40
	94.70	99.70	5	11.66
Incl.	97.30	99.30	2	20.57
EC-78-6	85.70	86.70	1	2.06
	117.30	122.60	5.30	4.11
EC-79-4	31.50	33.30	1.80	3.77
	36.60	37.80	1.20	3.43
	39.60	40.50	0.90	1.54
EC-79-6	257.10	257.40	0.30	1.03
83-MS-1	116.10	117.10	1	1.03
	132.00	132.60	0.60	1.37
83-MS-4	103.90	104.30	0.4	1.37
83-MS-5	78.70	79.20	0.5	1.37
83-MS-7	97.30	98.10	0.8	1.58
SE-04-01	120.86	121.30	0.44	14.3
	125.28	125.81	0.53	10.35
	166.49	166.66	0.17	7.75

Hole SE-04-01 intersected a 5.32 metre mafic dyke between 168.58 and 173.9 metres, which likely represents the Resenor Zone. It contained several quartz-carbonate-tourmaline veins with pyrite and chalcopyrite, but the gold content was uniformly low, with the best assay being 552 ppb Au over 0.67 m. A second mafic dyke, 2.98 metres thick, lying just above the assumed Resenor Zone at 164.9 to 167.88 metres, contained a narrow quartz stringer assaying 7.75 g/t over 0.17 m. This may represent the beginning of a separate zone just above the Resenor Zone. The character of the zone has clearly changed at depth from a shear zone with quartz veins and pyrite to a dyke-hosted zone. It is possible that the hole was not drilled deep enough to intersect a possible lower splay of the Resenor Zone.

Higher up hole SE-04-01, between 120 and 130 metres are two separated gold-bearing intersections that appear to be the beginning of a totally separate vein system. The upper of these intersections (14.30 g/t Au over 0.44 m) is within a 3.72-metre thick zone of quartz-tourmaline veining with up to 3% pyrite in the altered intrusive and up to 2% pyrite in the veins.

The second hole drilled by Thelon Ventures Ltd. (SE-04-02) intersected a 5.69 metre thick shear zone from 116.94 to 122.63 metres probably representing the Resenor Zone. It is described as being altered with several quartz-tourmaline-pyrite stringers. The best gold value was 527 ppb Au over 0.44 m. Again the hole may not have been deep enough to cut the possible lower splay of the Resenor Zone.

11.2 The 104 Zone

The 104 Zone, which lies 225 metres north of the Resenor Zone, appears to be of similar character. It has a similar west-north-westerly strike and south-westerly dip. The Zone appears to be narrower however, and returned lower gold values. Table 3 gives the assay results greater than 1 g/t Au for this Zone. The Zone only appears to have been tested by six holes along a 250 metre strike length, and should be further investigated.

Table 3. Drill intersections at the 104 Zone (after Bowdidge, 2005).

Hole (no)	from (m)	to (m)	length (m)	Assay (g/t Au)
102	139.8	140.4	0.6	1.03
104	90.4	91.1	0.7	19.61
	131.6	131.7	0.1	1.03
	146.1	146.4	0.3	1.03
105	212.3	212.8	0.5	1.03
106	61.9	62.3	0.4	1.03
83-M4-1	98.8	99.3	0.5	4.46
	100.4	100.8	0.4	1.37

11.3 The North Zone

The North Zone was discovered by El Coco Explorations in 1978 by drilling a VLF conductor. It consists of quartz veins with tourmaline and pyrite within a mafic dyke cutting the Bourlamaque Batholith, and as such, has similarities to many of the zones in the nearby Beaufor Mine. Drill results are given in Table 4.

The North Zone has only been tested by six drill holes, and deserves further attention, especially at the east end of the conductor where it terminates against the contact of the hornblendite body. Just south of the North Zone is an array of nine old (pre-1978) drill

holes aligned on what appears to be an east-northeast trending structure. There is no information on the results of these holes, but it seems likely that there were some encouraging results there, given that so many holes were drilled over a length of 135 metres.

Table 4. Drill intersections at the North Zone (after Bowdidge 2005).

Hole (no)	from (m)	to (m)	length (m)	Assay (g/t Au)
EC-78-3	118.6	119.3	0.7	25.03
	143.4	143.6	0.2	4.46
EC-79-3	29.6	29.9	0.3	1.03
	31.8	32.9	1.1	5.14
	71	72.5	1.5	1.03
	98.5	100	1.5	6.51
83-MN-4	72.2	72.6	0.4	4.46
83-MN-5A	157.3	157.7	0.4	1.03
	158.4	158.8	0.4	5.14
	168.2	169.5	1.3	1.03
SE-04-03	61.23	61.81	0.58	1.03

12. Exploration

A 2,000 metre drill program is currently underway on the Senore Property following the discovery of significant gold mineralization, including 35.8 g/t Au over 0.5 m at the south-eastern limit of the claims (see Press Release by Adventure Gold Inc. dated by October 9th 2008). Drilling was contracted to Major Drilling Ltd, under the supervision of Adventure Gold Inc. geologists with Jules Riopel M.Sc, P.Geo., MBA acting as the “Qualified Person”.

13. Drilling

The ongoing drill program is at its beginning stages and therefore there is no available data at this time. The completion of this campaign is the subject of the recommendation of this report, with an allocated budget of C\$220,000.

14. Sampling Method and Approach

Adventure Gold Inc. applied a typical sampling method which, on the Senore Property, is carried-out almost exclusively by diamond drilling. Rock core with NQ diameter is described with the use of a sampling booklet with pre-numbered pages. Mineralized intersections are submitted to splitting by the use of a diamond saw. A section of 0.5 m to 1 m in length of one half of the core is then sampled in a plastic bag and numbered with the use of detachable part of the sampling booklet. Sample bags are then carried to ALS-Chemex in Val d’Or for gold assay. In addition, positive results are routinely re-

analysed by ALS-Chemex. A similar approach is to be used in channel sampling if any mineralization is to be found from stripping activities.

15. Sample Preparation, Analyses and Security

Samples are securely shipped to the laboratory by Adventure Gold Inc. employees. At the laboratory, the samples are crushed and a 30-gram split of the pulverized material is prepared using fire-assay, and then analysed for gold by fire assay with atomic absorption finish and reanalysis with gravimetric assay for grades above 5 g/t Au. The detection limit is 5 parts per billion (ppb). Samples are also submitted to analysis for 33 additional elements by ICP-MS.

16. Data Verification

Adventure Gold Inc. introduces 1 standard and 1 blank for every series of 25 samples to control analytical results. Because these results are not yet available, they are to be used in subsequent version of this report to give an account of the validity of the results. A resampling test carried-out by Bowdidge (2005) showed that an original intersection of 10.77 g/t Au on half of the core returned 4.49 g/t Au on a quarter split of the same core section. The discrepancy is attributed by this author to the association of gold with heterogeneously distributed coarse pyrite, a situation that is known to be associated with this type of mineralization (Chabot 2007).

17. Adjacent Properties

The Senore Gold Project is immediately adjacent to the Beaufor North property which is 100% owned by Adventure Gold Inc., which recently discovered significant gold mineralization in diamond drill hole BN-08-01 near the eastern limit of Senore claims (Figure 6). This mineralization consists of quartz tourmaline pyrite veins and returned two significant intersects of 35.8 g/t Au over 0.5 m and 6.6 g/t Au over 0.9 m (see Adventure Gold Inc Press Release dated by October 9th 2008).

Finally, the gold potential of the Senore Property is partly based on its geological similarity to the nearby Beaufor Gold Mine operated jointly by Richmond Mines and Louvem Mines. The present day Beaufor Mine and its predecessor operations (Perron, Pascalis and Courvan) produced a total of 990,000 ounces of gold (Richmond web page 2008).

It should be specified, however, that the proximity and geological similarity of the Senore Property to the Beaufor Gold Mine does not necessarily indicate that economic gold mineralization is present on the Senore Property. Also, the information contained in this section cannot be directly verified or corroborated by the author.

18. Mineral Processing and Metallurgical Testing

No metallurgical testing has been performed on samples from the Senore Property.

19. Mineral Resources and Mineral Reserve Estimates

The issuer has not commissioned a resource estimate relative to the Senore Property.

20. Other Relevant Data and Information

There is no additional information or explanation necessary to make the technical report understandable and not misleading.

21. Interpretation and Conclusions

On the basis of its location in the gold producing Val-d'Or area, its geological environment, and exploration results to date, it must be concluded that the Senore Property requires additional exploration work to clarify the economic potential of the vein-type gold mineralization that is observed on the property. In particular, the Property resides in a low compressional area relative to the Boulamaque Batholith, which is favourable for gold vein mineralization, as suggested by the nearby Beaufor Mine.

Some of the IP chargeability anomalies from historical exploration works would indicate concentrations of sulphides remained to be tested from stripping or drilling. In addition, low or no chargeability signals does not indicate the absence of gold-mineralization since the Resenor Zone, which represents the best developed gold-bearing system known to date on the property, is not associated with a chargeability anomaly.

Finally, two types of mineralization returned significant gold values on the property namely (1) gold-bearing quartz-tourmaline-pyrite veins (North Zone) and (2) quartz cored shear zone with ankerite and sericite alteration (Resenor Zone and 104 Zone). A significant intersection associated with type 1 was recently found at the south-eastern limit of the Senore Property which triggered interest on the potential extension of that mineralization within the Senore claims. Both of these promising mineralization systems were poorly studied below the 150-200 metre level and thus warrant further exploration works.

22. Recommendations

It is recommended to follow the drill program at Senore to further test the known gold mineralization down to 400 m across the southern tip of the Property with an allocated budget of C\$220,000. A two-phased exploration budget is presented below totalling C\$1,200,000 (Table 5) and includes 9,150 metres of diamond drilling.

The Company should at first concentrate its efforts on locating the lateral extension and depth of the Resenor gold bearing structures and the presence of a quartz veins staking system, particularly on the southeast edge of the Property, where Adventure Gold Inc made a recent discovery on their adjacent Beaufor North property. Of particular interest is to test the western extension of this newly found mineralization and its relationship to the Resenor Zone. Shallower structures located along the margin of the Bourlamaque Batholith should also be tested by drilling. Known structures may contain sufficient tonnage and grade to eventually justify a feasibility study on the Senore Property. The main objective of the campaign is to obtain a better knowledge of the gold bearing shear zone and quartz-vein system down to a depth of 400 m.

22.1 Phase I

- Systematic compilation of all existing geoscientific data at regional and property scale, putting all information in a standard GIS format, including topographic and geological maps, DDH (in three dimensions), geochemical data, etc.
- Stripping at six sites, including the margins of the Batholith and IP anomalies
- A 22-hole diamond drill program totalling 7,950 metres (Figure 7).

Recommended drilling (Figure 7) will test the western extension of the two zones intercept in the hole BN-08-01 on Adventure Gold's adjacent Beaufor North property at the southeast margin of the Senore Property. Three holes are recommended to test the continuity and geometry of this structure.

Table 5. Budget recommended for Phase I and Phase II on the Senore Property.

Phase I	quant.	item	@	Cost (C\$)
Diamond drilling (in progress)	2 000	m	\$110.00	\$220,000.00
Compilation of geoscientific data	40	man-days	\$500.00	\$20,000.00
Stripping	6	excv.	\$2,500.00	\$15,000.00
Diamond drilling	5 950	m	\$110.00	\$654,500.00
Contingency (approx 10%)				\$90,500.00
Total for phase I				\$1,000,000.00
Phase II				
Diamond drilling	1 200	m	\$110.00	\$132,000.00
43-101 resources estimate	100	man-days	\$500.00	\$50,000.00
Contingency (approx 10%)				\$18,000.00
Total for phase II				\$200,000.00
Total for phase I and II				\$1,200,000.00

Drilling must also include 3 holes to test the downward extension of the Resenor gold mineralization. The historical hole SE-04-01, drilled in that same direction, intersected 4.4 g/t over 1.44 m including 14.3 g/t over 0.44 m and 4.13 g/t over 1.34 m and 10.35 g/t over significant gold even though it was too short to reach the known 164 m level gold vein which is known over a 200 metres strike (Bowdidge, 2005). These 3 holes must help to define the strike and lateral extension of the quartz-vein system.

The down plunge of the 104 Zone must also be directly tested with three holes. There, a historical hole returned 19.61 g/t Au over 0.7 m Au, 4.46 g/t Au over 0.44 m and 4.8 g/t Au over 0.76 m (83-M4-01). The eastern extension of the 104 Zone towards the outer contact of Boulamaque Batholith also deserves more attention. It will be important to test the margin of the Boulamaque Batholith between interpreted shear zones, specifically:

- Two holes to test at depth the North Zone shear package
- One hole to test the junction between the 104 shear zones and east-west shear zone.
- One hole to test the possibility of more auriferous quartz veins staking directly to the north of the 104 Zone, close to the pluton margin.

22.2 Phase II

Contingent of the result of previous phase, additional drill holes and resource estimate are recommended as follows:

- Complete 4 holes in the Resenor zone between development to confirm the presence of the veins, grade and continuity of the zones for a total of 1,200 m.
- Complete a resource estimate for the Resenor deposit and update a 43-101 report.

23. References

- Berger, J., 2003**, Geo-structural interpretation of airborne Mag surveys, Groupe Conseil Cygnus inc for Osisko Exploration inc.
- Bergmann, H.J., 1973**, Report on magnetometer survey; H.J. Berman P. Eng for Senore Gold Mines Ltd., GM 28841, 5 p. 1 map.
- Bergmann, H.J., 1974**, Report on magnetometer survey; H.J. Berman P. Eng for Senore Gold Mines Ltd., GM 29906, 4 p. 1 map.
- Bergmann, H.J., 1975a**, Report on electromagnetic survey; H.J. Berman P. Eng for Senore Gold Mines Ltd., GM 31049, 4 p. 1 map.
- Bergmann, H.J., 1975b**, Report on VLF electromagnetic survey; H.J. Berman P. Eng for Senore Gold Mines Ltd., GM 32010, 5 p. 2 maps.
- Bergmann, H.J., 1976**, Addendum to report; H.J. Berman P. Eng for Senore Gold Mines Ltd., GM 32116, 2 p. 2 maps.
- Bergmann H.J., 1977**, Report on “Collins” basal sampling, Senneville and Pascalis Townships; Prospecting and Geophysics Ltd for El Coco Exploration Ltd. GM 32987, 5 p. 6 maps.
- Bergmann H.J., 1978a**, Report on electromagnetic survey, Senneville and Pascalis Townships; Prospecting and Geophysics Ltd for El Coco Exploration Ltd. GM 34555, 8 p. 1 map.
- Bergmann H.J., 1978b**, Diamond drill record, El Coco Exploration Ltd Property, Senneville and Pascalis Townships; Prospecting and Geophysics Ltd for El Coco Exploration Ltd. GM 34700, 8 p. 1 map.
- Bergmann H.J., 1979**, Report on “Collins” basal sampling, Senneville and Pascalis Townships; Prospecting and Geophysics Ltd for El Coco Exploration Ltd. GM 33574, 6 p. 6 maps.
- Bergmann H.J., 1983**, Report on magnetometer survey on property of El Coco Exploration Ltd; Prospecting and Geophysics Ltd for El Coco Exploration Ltd., GM 39896, 6 p. 1 map.
- Boileau, P., 1983**, Induced polarization and resistivity survey, Senore, Property; Prepared for El Coco Exploration Ltd., GM 40906., 10 p. 5 maps.
- Boileau, P., 2003**, *Levé magnétométrique effectué sur le projet Senore, canton de Pascalis, Abitibi, Québec*, Prepared for 4097394 Canada inc., GM 60331. 7 p. 3 maps.
- Campiglio, C. M. and Darling, R., 1976**, The geochemistry of the Archean Bourlamaque Batholith, Abitibi, Québec, Canadian Journal of Earth Sciences, v. 13., p. 972-986.
- Chabot, F., 2007**, *Rapport Technique 43-101, Évaluation des réserves et ressources au 31 décembre 2006, Mines Richmond-Division Beaufor; Golder Associés Ltée pour Mines Richmond inc. et Société Minière Louvem inc.* (available on Mines Richmond web site), 319 p.

- Chartré, E., 1997**, Magnetometer Survey, Pascalis Township Property, Service exploration Enr. for Amblin Resources Inc.
- Dimroth, E., Imreh, L., Rocheleau, M. and Goulet, N., 1982**, Evolution of the south-central part of the Archean Abitibi Belt, Québec, Part I: Stratigraphy and paleogeographic model, *Canadian Journal of Earth Sciences*, v. 19, p. 1729-1758.
- Dumont, G.H., 1978**, Report on the Pascalis and Senneville Twps. Property, Abitibi-East County, Northwestern Québec, Prepared for El Coco Explorations Ltd.
- Gauthier, J., 1984**, *Campagne de sondage 1983, Propriété Senore, Canton de Pascalis et de Senneville, Abitibi, Québec*; Prepared for la Société en commandite Métalor « A », GM 40907, 189 p. 19 maps.
- Germain, M., 1984**, Notes on NewPascalis, Senore and Perron; GM 41895, 3 p.
- Henriksen, G.N., 2004**, Report on the diamond drilling program on the Senore Property of Thelon Ventures Ltd, GM 61766, 88 p.
- Hocq, M., 1994**. *La province du Supérieur. In Géologie du Québec, Ministère des Richesses Naturelles, Québec*, MM 94-01: 7-20.
- Hubert, C., Trudel, P. and Gélinas, L., 1984**, Archean wrench fault tectonics and structural evolution of the Blake River Group Abitibi Belt, Québec; *Canadian Journal of Earth Sciences*, v. 21, p. 1024-1032.
- Hughes, R., 1980**, Report on VLF electromagnetic survey; Prospecting and Geophysics Ltd for El Coco Exploration Ltd. GM 36641, 6 p. 2 maps.
- Imreh, L., 1976**, *Nouvelle lithostratigraphie a l'ouest de Val-d'Or et son incidence gîtologique; Ministère de l'Énergie et des Ressources du Québec*, DPV-349.
- Lambert, G., 2004**, Report on ground magnetometer and Induces Polarization surveys, Senore Gold Property; G.Lambert for Thelon Ventures Ltd, GM 61767, 17 p. 26 maps.
- LaSalle, P. and Henry, J., 1987**, *Geochimie du till, region de l'Abitibi (Projet Cadillac – Or As Sb et W); Ministère de l'Énergie et des Ressources du Québec*, DP-87-22, 7 p. 4 maps.
- Latulippe, M., 1976**, The Val-d'Or-Marlartic Area of Northwestern Québec; in Latulippe, M., ed., *Geological Excursion, Val-d'Or-Marlartic; Ministère de l'Énergie et des Ressources du Québec*, DP-367, p. 29-52.
- Norrie, J.P., 1939**, Report on the Property; Senore Gold Mines ltd., GM08459, 3 p.
- Poulsen, K.H., 1995**, Lode gold: in *Geology of Canadian deposit types* Eckstrand O.R., Sinclair, W.D. and Thorpe, R.I. (eds), Geological Survey of Canada, *Geology of Canada*, No8, p323-328.
- Robert, F., 1989**, Internal structure of the Cadillac tectonic zone southeast of Val d'Or, Abitibi Belt, Quebec: *Canadian Journal of Earth Sciences*, v. 26, p. 2661-2675.
- Robert, F., 1990**, Structural settings and controls of gold-quartz veins of the Val d'Or area, southeastern Abitibi Province: University of Western Australia, *Special Publication 24*, p. 167-209.

- Robert, F., Poulsen, K.H., and Dubé, B., 1994**, Structural analysis of lode gold deposits in deformed terranes: Geological Survey of Canada , open File 2850, 140 p.
- Rocheleau, M., Hébert, R., Lacoste, P., Racine, M., Gaudreau, R. and St-Julien, P., 1997**, *Synthese stratigraphique, paléogéographique et Géologique : cantons de Vauquelin, Pershing, Haig et parties des cantons de Louvicourt, Pascalis et Denain*; Ministère des Ressources Naturelles, MB 97-11, 224 p. 6 maps.
- Ross, S.H. 1940**, Report on the Property; Senore Gold Mines Ltd., GM 08462A to C, 4 p. 5 map.
- Ross, S.H., 1941**, Report on the Property; Senore Gold Mines Ltd., GM 08507, 2 p. 5 map.
- Taner, M.F. and Trudel, P., 1989**,. Bourlamaque batholith and its gold potential, Val d'Or, Quebec; Bulletin de l'Institut Canadien des Mines et de Métallurgie, V. 82, No 922, p. 33-42.
- Taner, M.F., 2007**, Evaluation Report : Beaufort Gold Property, Abitibi, Québec (August 2007 update); Taner & Associates Inc. for Adventure Gold Inc. Internal Report, 38 p.
- Tessier, A.C., 1990**, Structural evolution and host rock dilation during emplacement of gold quartz veins at Perron deposit, Val d'Or, Quebec; unpublished M.Sc. A. thesis, Queen's University, Kingston, Ontario 242 p.
- Tremblay, A., 2001**, Postmineralization faults in the Beaufort gold deposit, Abitibi Greenstone belt, Canada: geometry, origin, and tectonic implications for the Val d'Or mining district. *Economic Geology*, v.96, p. 509-524.
- Trudel, D., 2004**, Technical Report, Beaufort Mine, Val-Senneville, Québec; prepared for Richmond Mines Inc., x p.
- Vu, X.L., 1985**, *Géologie de la mine d'or Belmoral, Val d'Or, Québec: M.Sc. A. thesis, École Polytechnique de Montréal*, 71 p.
- Zalnierunas, R.V., 1999**, Induced Polarization and Resistivity Reconnaissance Survey on the Senore Claims, Pascalis Township, NTS 32C14, Prepared for Amblin Resources Ltd, GM57901, 9 p.

24a. Date and Signature

This report entitled “Technical Report on the Senore Gold Property, Abitibi, Québec; in accordance with National Instrument 43-101” was prepared by the following author.

November 12th, 2008



<< *Rémi Charbonneau* >>

Rémi Charbonneau,
Geologist, Ph.D., OGQ member #290

24b. Certificate of Author

I, Rémi Charbonneau, residing at 7667 Chateaubriand Avenue, Montreal, Quebec, hereby certify that:

I am presently an Associate of Inlandsis Consultants s.e.n.c. located at 7667 Chateaubriand Ave., Montreal, Quebec, H2R 2M2.

This certificate applies to the technical report entitled “Technical Report on the Senore Gold Property, Abitibi, Québec, in accordance with National Instrument 43-101”, dated November 12th, 2008.

I received a B.Sc. in Geology from the University of Montreal in 1986 and a Ph.D. degree in Glacial Geology in 1995 from the same institution. I have been working as a geologist in mineral exploration since 1995.

I am an active Professional Geologist presently registered to the board of the Ordre des Géologues du Québec, permit # 290.

I am a Qualified Person with respect to the Senore Gold Project in accordance with the specifications described in section 1.1 of National Instrument 43-101.

I have not been involved with the property that is the subject of the present Technical Report.

As of the date of this Certificate, to the best of my knowledge, information and belief, the Technical Report contains all scientific and technical information that is required to be disclosed to make the technical report not misleading.

I am responsible for all items of the present Technical Report on the Senore Property

I fulfill the requirements set out in National Instrument 43-101 for an “independent qualified person” relative to Adventure Gold Inc.

I visited the property on November 7th 2008 and accessed the old shaft and working drill rig.

I have read and used National Instrument 43-101 and Form 43-101F1 to prepare the present report in accordance with its specifications and terminology.

I consent to the filing of the Technical Report with any stock exchange and other regulatory authority and any publication by them for regulatory purposes, including electronic publication in the public company files on their website accessible by the public, of the Technical Report.

I do not hold any shares of Adventure Gold Inc.

November 12th, 2008



<< Rémi Charbonneau >>

Rémi Charbonneau,
Geologist, Ph.D., OGQ member #290

25. Additional Requirements

There are no additional requirements regarding development and production plans for this Project in the near future.

26. Illustrations

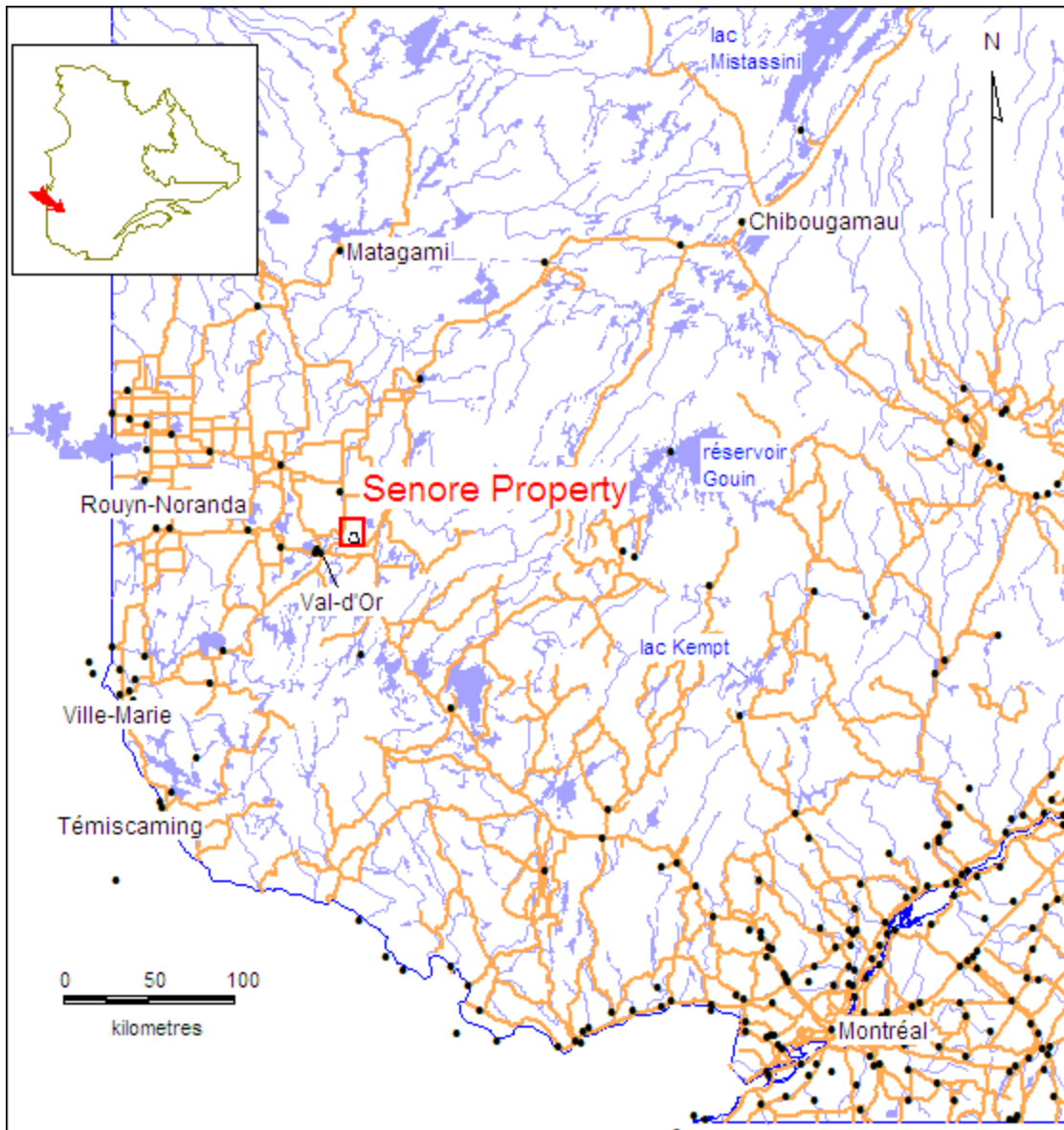


Figure 1. Location of Adventure Gold's Senore Gold project

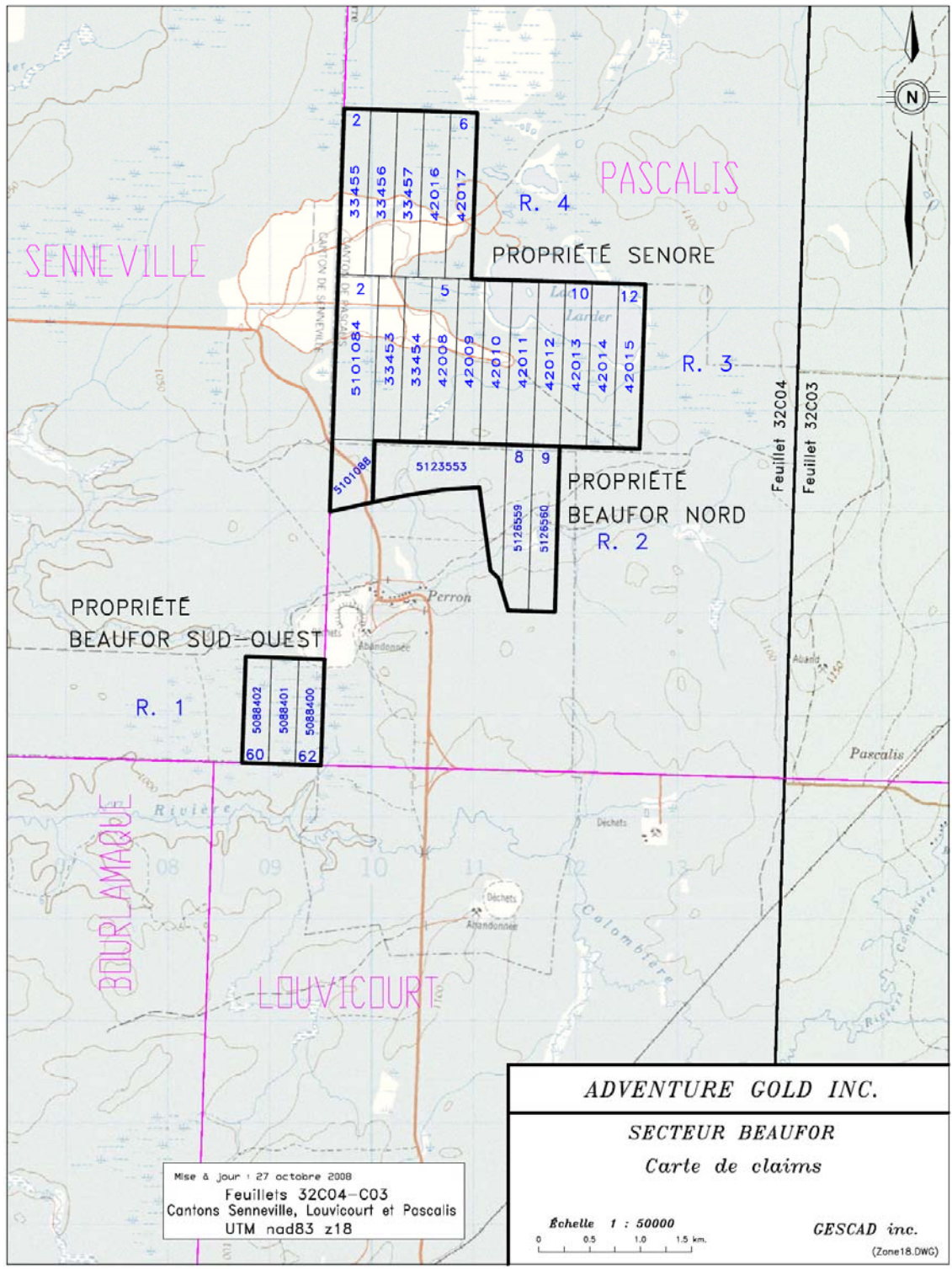


Figure 2. Senore Property claim map with Adventure Gold’s adjacent Beaufor North property

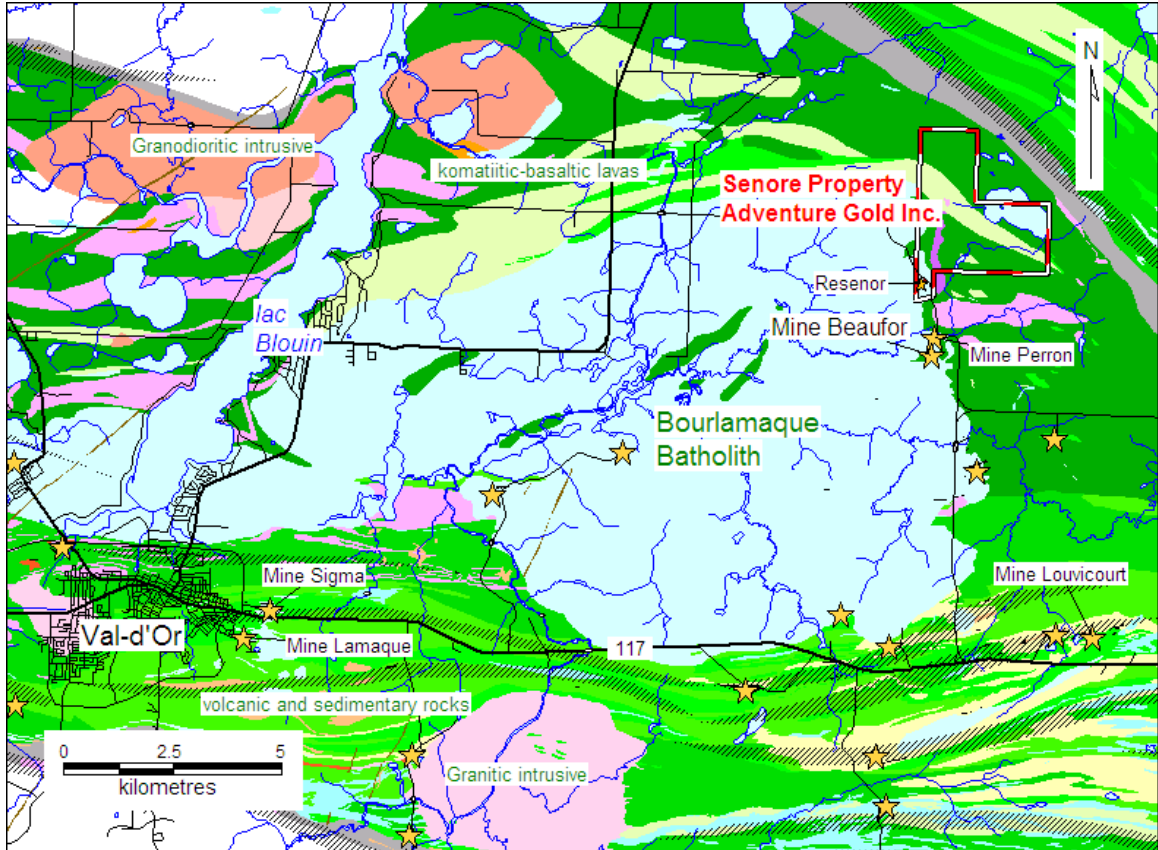


Figure 3. Generalized geology and gold deposits in the Val-d'Or area (geology from SIGEOM 2008).

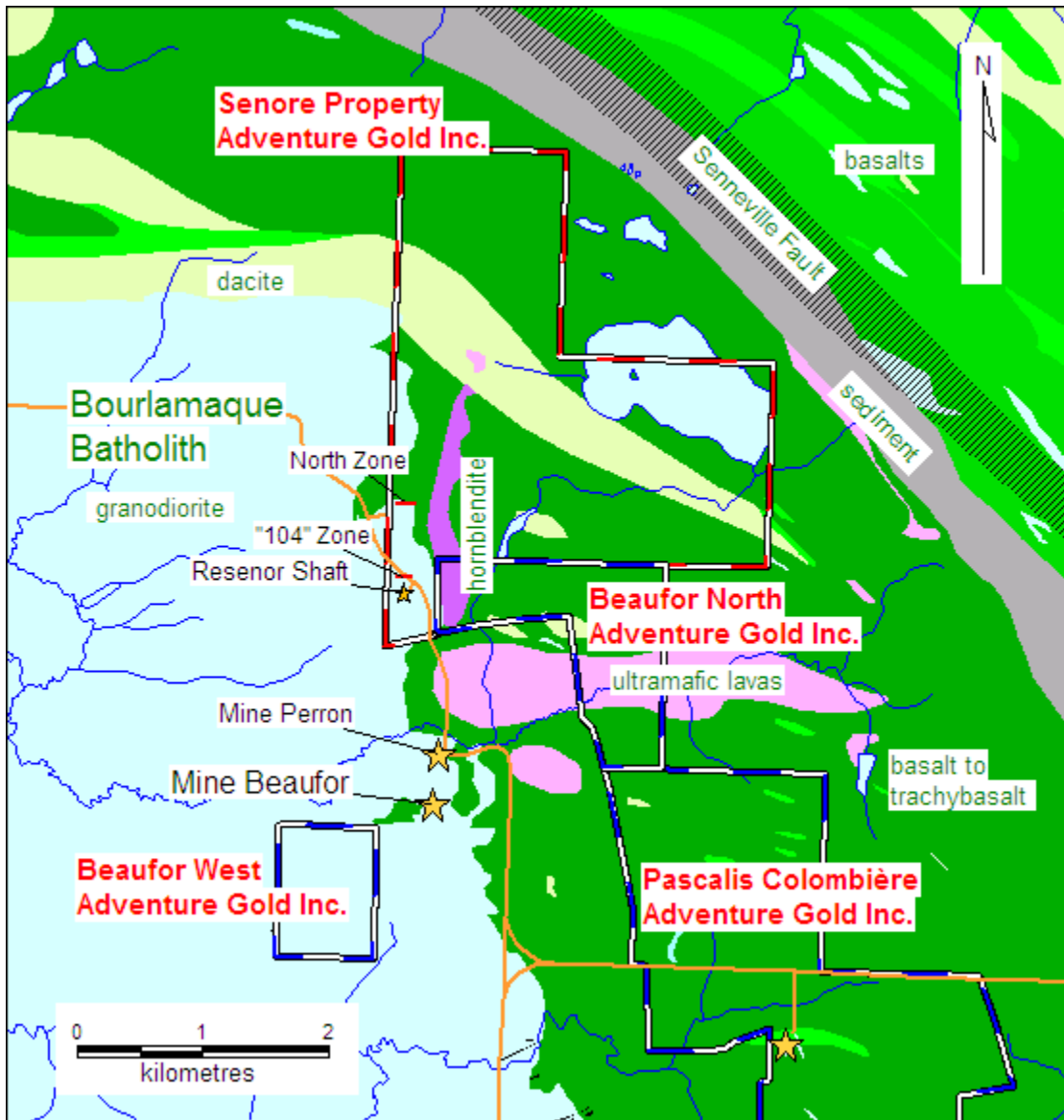


Figure 4. Geology and mineralization of the Senore Property (geology from SIGEOM 2008).

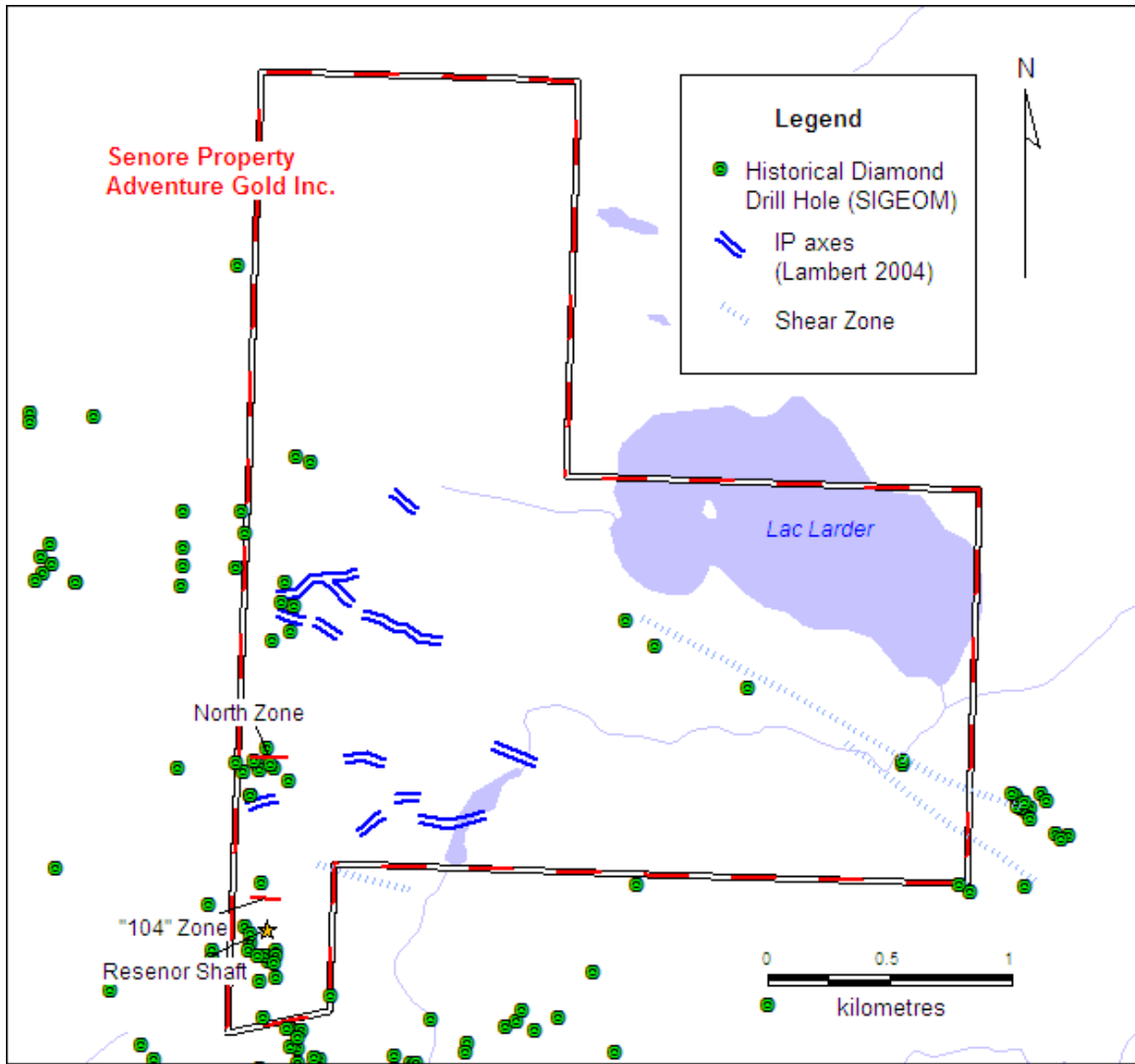


Figure 5. Historical exploration on the Senore Property

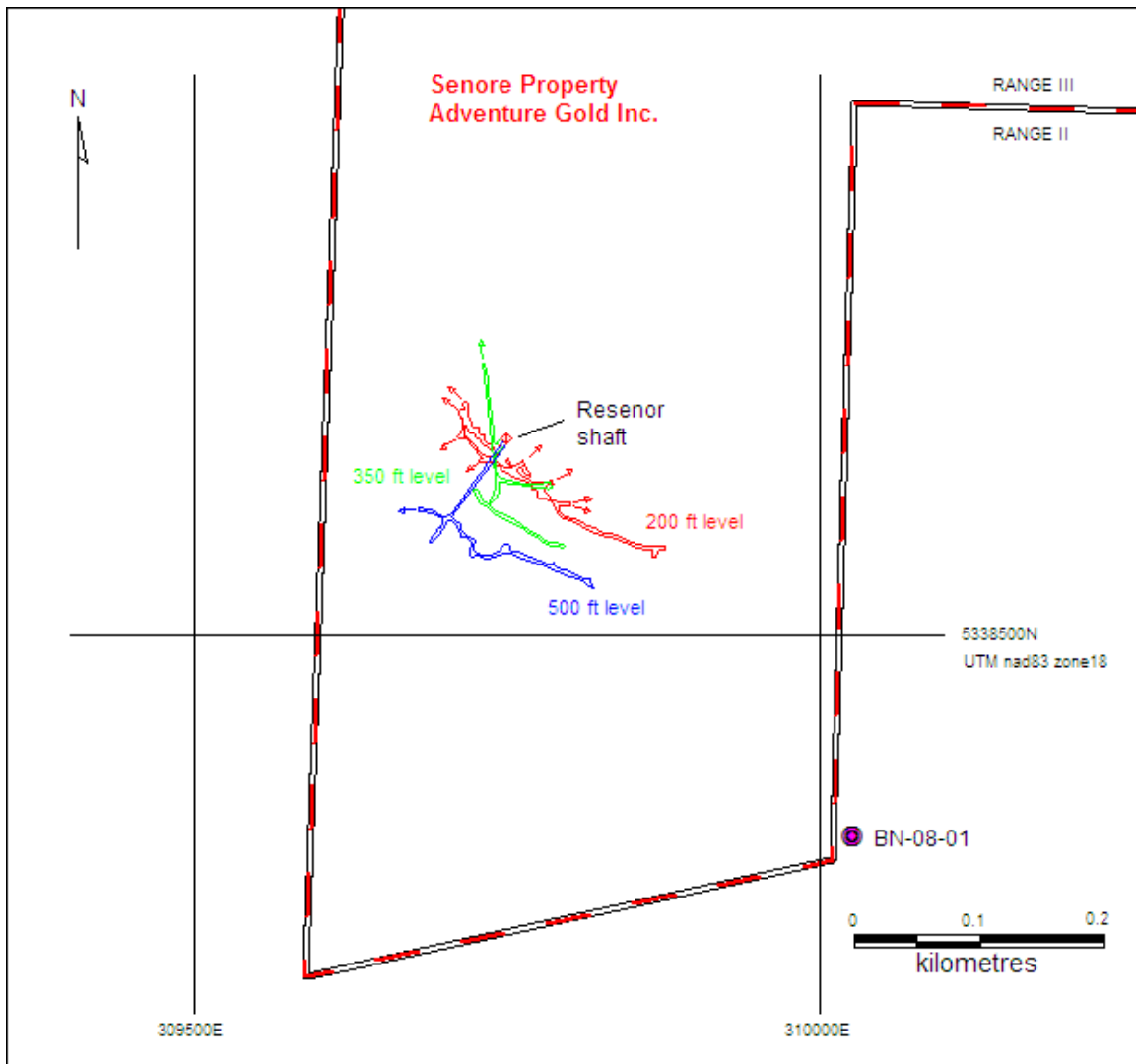


Figure 6. Historical development of the Resenor Gold Zone located within Adventure Gold’s Senore claims with the position of the recent hole, BN-08-01, which intersects 35.8 g/t Au over 0.5 m and 6.6 g/t Au over 0.9 m (Adventure Gold Inc Press Release dated by October 9th 2008).

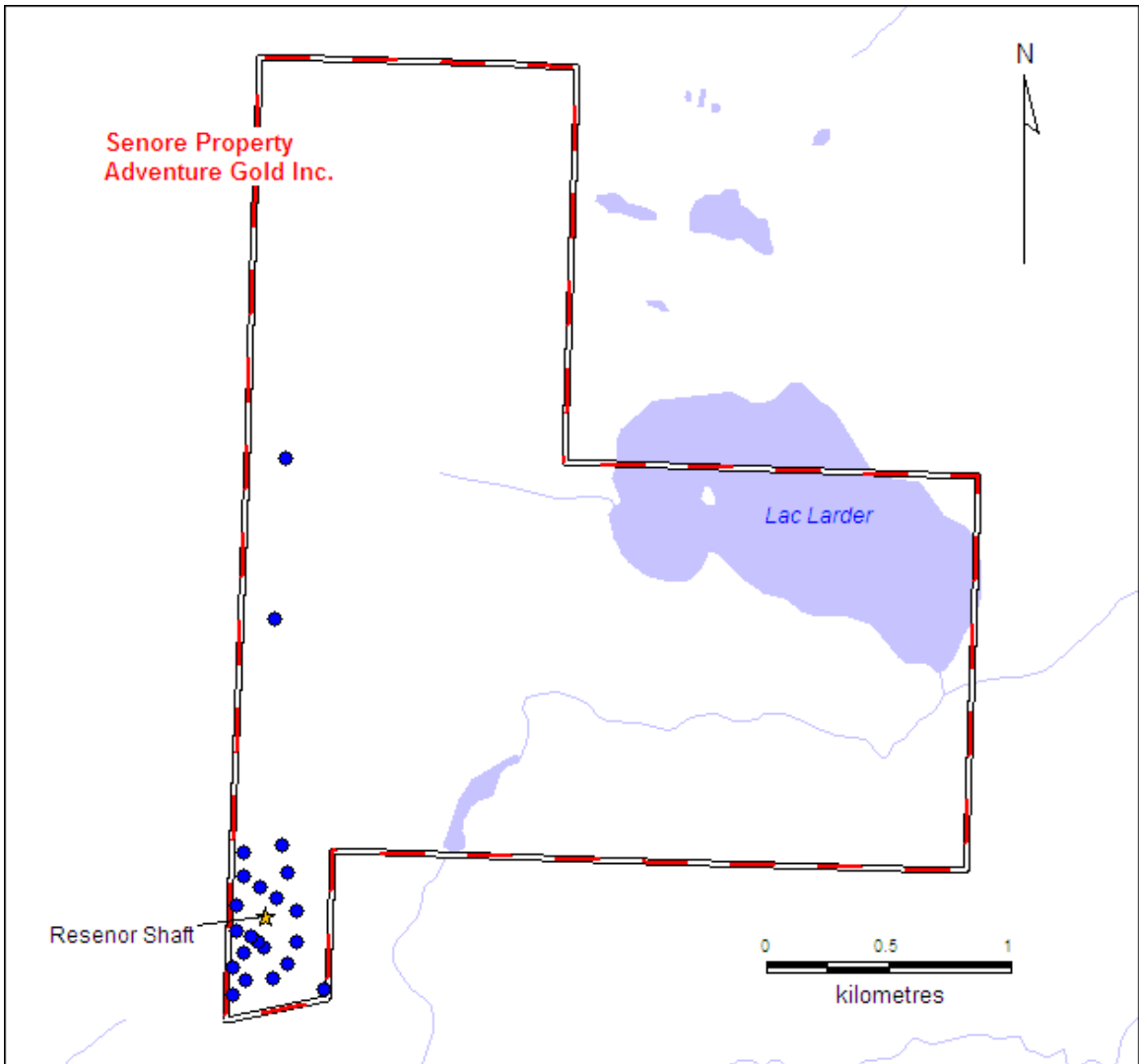


Figure 7. Recommended drill program on the Senore Property, 26 diamond drill holes from the 22 drilling sites shown on this map.